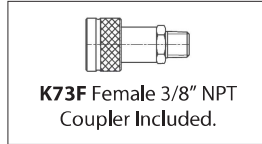
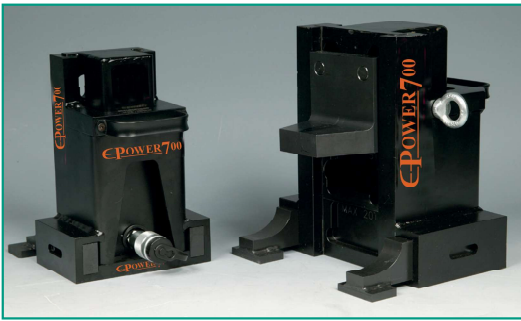


Eurojack Head and Toe Lifting Jacks

UJ Series



Capacity:
10 & 25 tonnes

Stroke:
150 mm

Minimum Toe Clearance:
25 - 30 mm

Maximum Operating Pressure:
700 bar (10,000 psi)



FEATURES

'UJ' Series **Power Jack** with adjustable lifting toe is designed to lift large loads from very low positions.

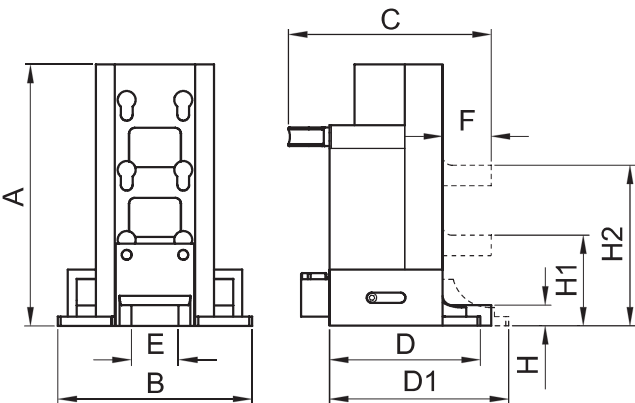
Extendable bases are provided for maximum stability. Lifting toe can be positioned at 3 different levels with only 25mm minimum clearance needed.

Jack operates both vertically and horizontally. The head of the jack may also be used to lift load vertically or be turned onto its side for pushing application.

Equipped with **CMI Series Single-acting Spring Return Cylinder**.

Application:-

- Suitable for lifting, moving and levelling of machinery and heavy equipment from a very low starting height.



Hand Pump **PN131** model is the recommended pump to operate the Power Jack **UJ** model.

SELECTION CHART

Force (PUSH) Tonnes (kN)	Stroke mm	Oil Volume cm ³	MODEL	Dimensions (mm)										Weight kg
				A	B	C	D	D1	E	F	H	H1	H2	
10 (111)	150	238	UJ10	280	206	215	160	190	50	50	25	100	175	22
25 (232)	150	498	UJ20	314	271	290	230	265	70	70	30	110	190	45